



## PAINT PROTECTION FILM

---

**3M** Trained with over 20 years of installation experience

Exclusive dealer of **XPEL** ULTIMATE PLUS™

Tailored customer experience



@Eclipsetintshop

(604)-855-9635



THE MOST ADVANCED PPF ON THE MARKET



# STAY PROTECTED WHEREVER THE ROAD LEADS YOU

---

## BEST PROTECTION YOU WILL NEVER SEE

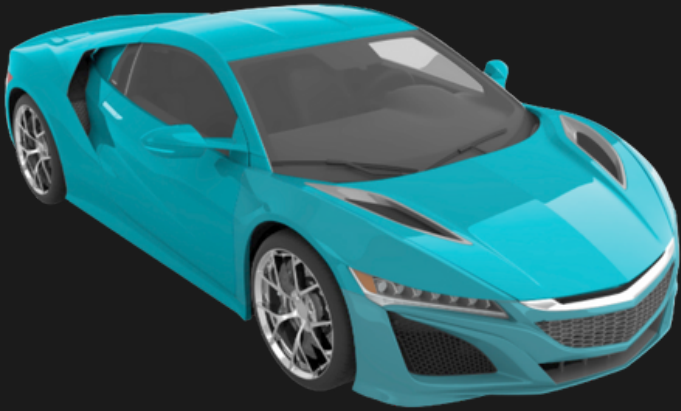
2011. Xpel revolutionized the industry with the world's first self-healing paint protection film. Ultimate Plus has raised their bars again with an unparalleled high gloss finish & improved impact protection.

Ultimate Plus is designed to provide you with the peace of mind you need on the open road, keeping your vehicle's surfaces safe from things like gravel, oils, bug acids, bird droppings, and stopping paint chips & rusting before they start.

Xpel also introduced their state of the art DAP (Design Access Program) Pattern Software that is the world's largest & most comprehensive pattern repository with 80,000 + real-time paint, headlamp, and window tint patterns.

With this DAP Program and our XPEL Certified Installers, the patterns offered by the DAP provide the confidence we need to apply film efficiently, accurately and without concern.

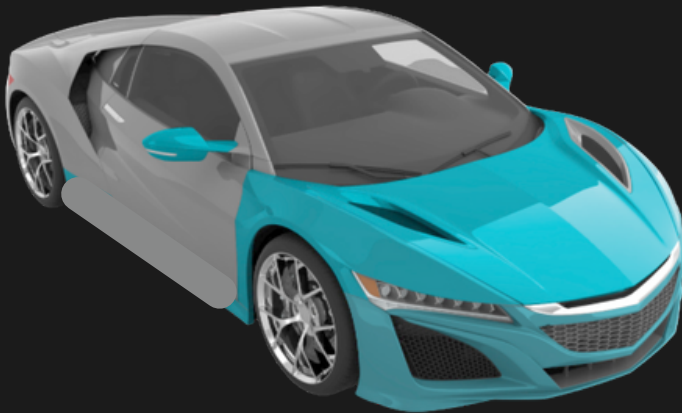
# XPEL PAINT PROTECTION BUNDLES



## ELITE PACKAGE

### Full Car Protection

Protect your entire vehicle's paint against everyday driving hazards like minor scrapes and scratches, paint chips, loading and unloading damage and more for a complete piece of mind.



## PREMIUM PACKAGE

### Full Front End Protection

Full Hood / Fenders  
Full Front Bumper  
Headlights / Foglights  
Mirrors

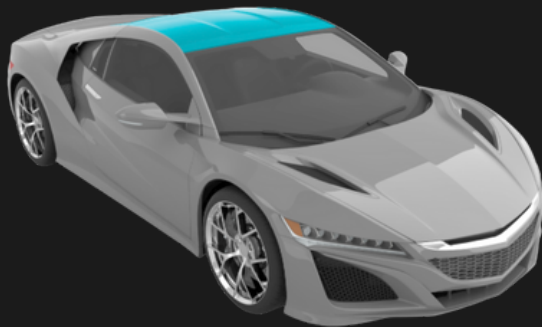
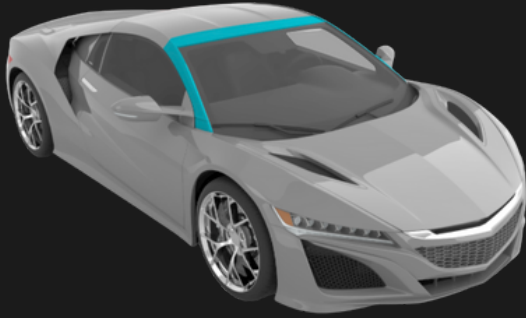


## STANDARD PACKAGE

### Partial Front End Protection Bundle

Partial Hood / Fender  
Full Front Bumper  
Headlights / Foglights  
Mirrors

# XPEL PAINT PROTECTION BUNDLES



## À LA CARTE

Singular or Add-ons

A-Pillar & Roof line

Rear Upper Bumper Loading

Door Handles

Door Edges

Door Steps

Full Roof

Splash Guard

Headlights/Foglights

## CALL (604)-855-9635

FOR AN ESTIMATE ON YOUR  
VEHICLE

or visit our office

#1-31251 Peardonville Rd. Abbotsford B.C.

Mon-Fri 8:30am - 4:00pm



# **ULTIMATE PLUS**<sup>TM</sup>

## PAINT PROTECTION FILM

### **HEAT ACTIVATED SELF-HEALING TOPCOAT**

Constructed from an elastomeric polyurethane, Ultimate Plus will self-heal light scratches & swirl marks with a light heat application to the film's surface.

### **NON-YELLOWING**

Xpel's proprietary film formulation will not yellow from UV exposure, ensuring protected areas are nearly invisible.

### **DISCOLORATION & STAIN RESISTANT**

Don't worry about specs, spots, or splotches from contaminants. Xpel Ultimate Plus is stain resistant & will maintain clarity under the harshest conditions.

### **PREVENTS WEAR & TEAR**

Stop rock chips, nicks & scratches in the paint, and keeping your vehicle looking as good as the day it rolled off the lot.

### **EDGE SEAL TECHNOLOGY**

Lifting & delamination are a thing of the past. Xpel's signature Edge Seal Technology ensures the film stays stuck & keeps surfaces protected from contaminants.

**Stop Paint Chips & Scratches today!**

**Call us at (604)-855-9635**

**for an estimate on your vehicle's protection**

#1-31251 Peardonville Rd.  
Abbotsford BC  
[www.eclipsewindtint.ca](http://www.eclipsewindtint.ca)

